

THE HUNTLEY

MODEL 120

TOWNHOME 3 BEDROOMS 2.5 BATHROOMS
2191 SQ. FT. (Includes 438 sq.ft. finished area in basement)



Valecraft
Homes (2019) Limited



Valecraft.com



*Rendering is an artist concept only. Not to scale and may vary from finished community. Roofline may vary or change based on block assembly. Dimensions, specifications and landscaping are approximate and are subject to change without notice.

E.&O.E. 10/2019

THE HUNTLEY

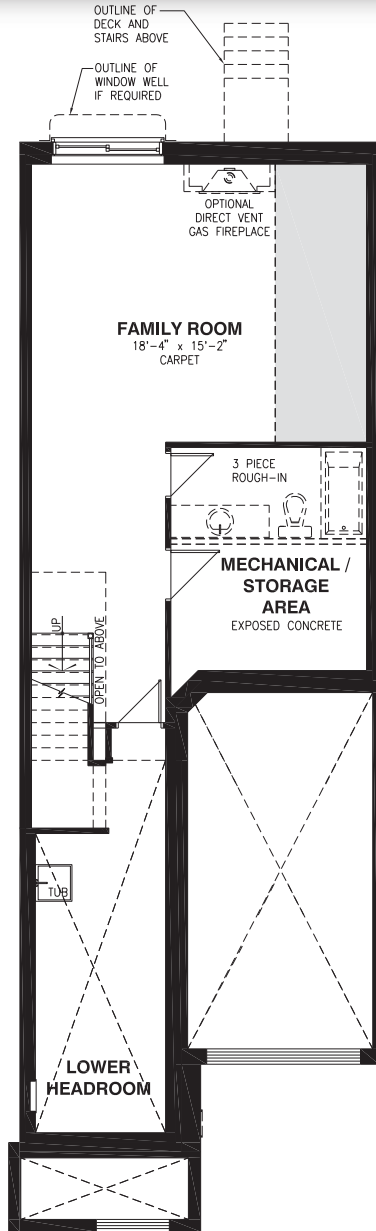
MODEL 120

TOWNHOME 3 BEDROOMS 2.5 BATHROOMS

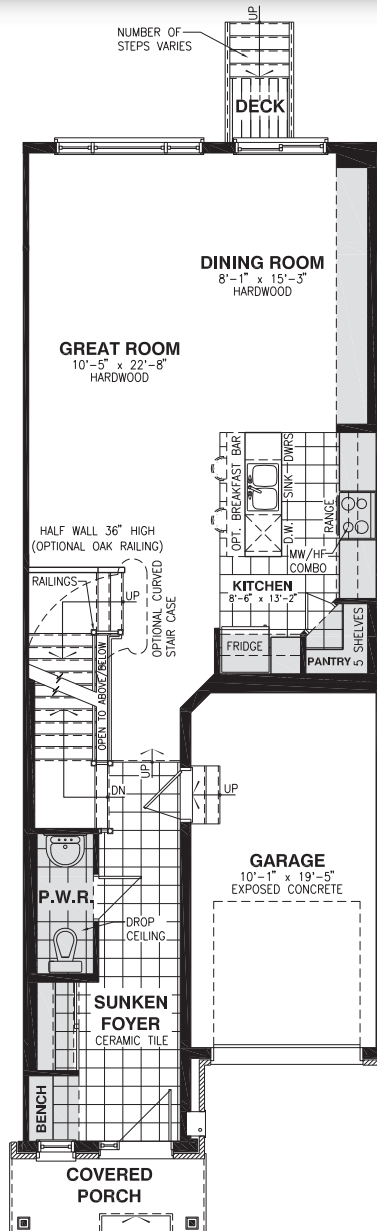
2191 SQ. FT. (Includes 438 sq.ft. finished area in basement)



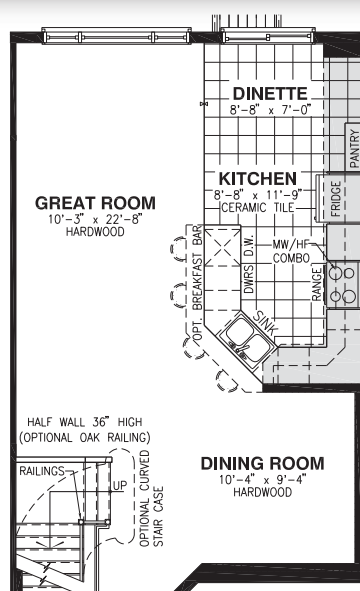
Valecraft
Homes (2019) Limited



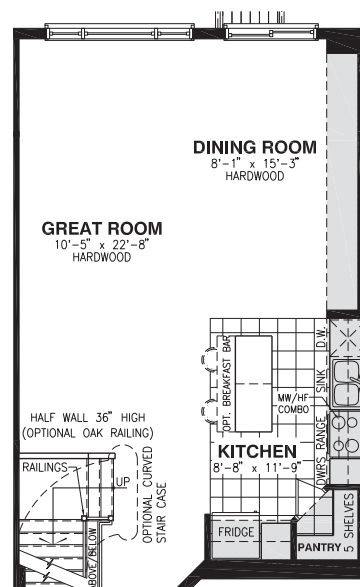
BASEMENT FLOOR



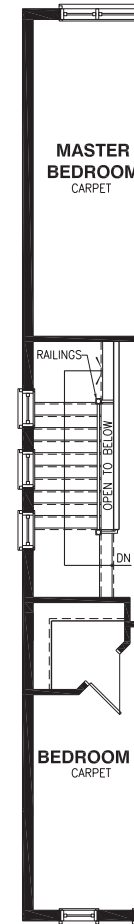
GROUND FLOOR



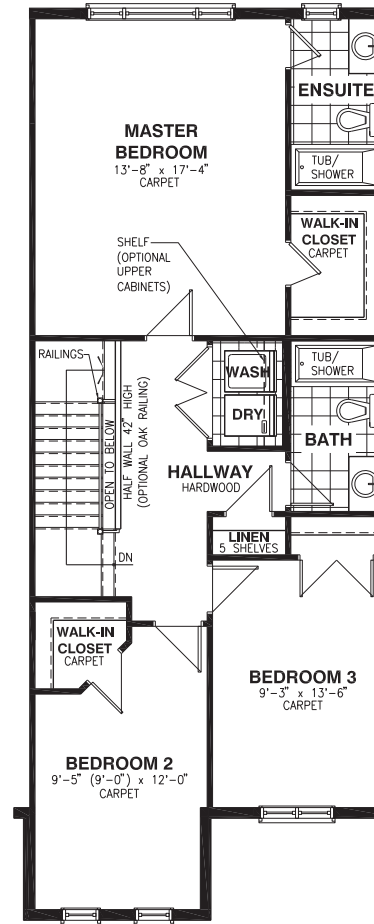
OPTIONAL KITCHEN #1



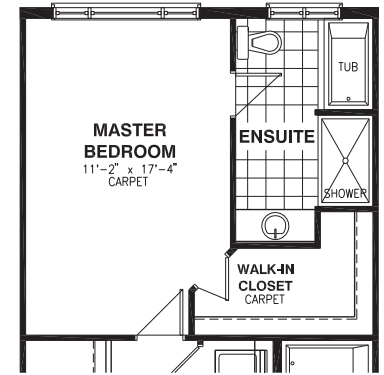
OPTIONAL KITCHEN #2



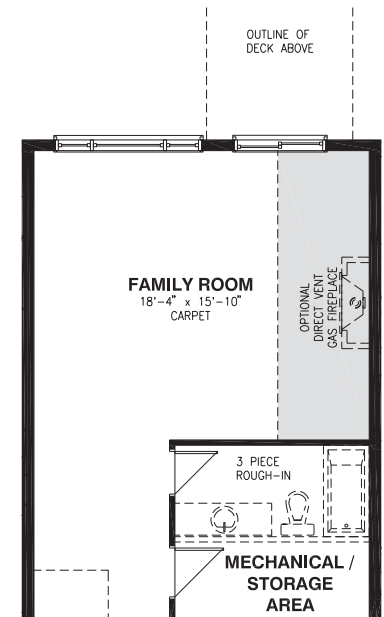
**END UNIT
SECOND
FLOOR**



SECOND FLOOR



OPTIONAL 4PC ENSUITE



**WALKOUT BASEMENT
WHERE APPLICABLE**



Vertical and/or horizontal bulkheads (chaseways) may be required to contain mechanical piping. Bulkhead shown in grey areas.

All dimensions are approximate. E. & O.E., plans, materials and specifications are subject to change without notice. Actual useable floor space may vary from the stated floor area. *Note: Number of steps varies due to site grading.